

# CRESCENDO

3 BEDROOMS, 2 1/2 BATHS, LIVING ROOM,  
FAMILY ROOM, LOFT AND 2-CAR GARAGE



ARTIST'S CONCEPT



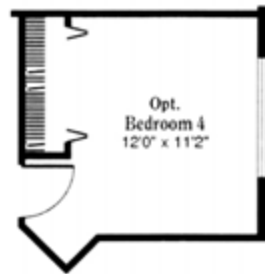
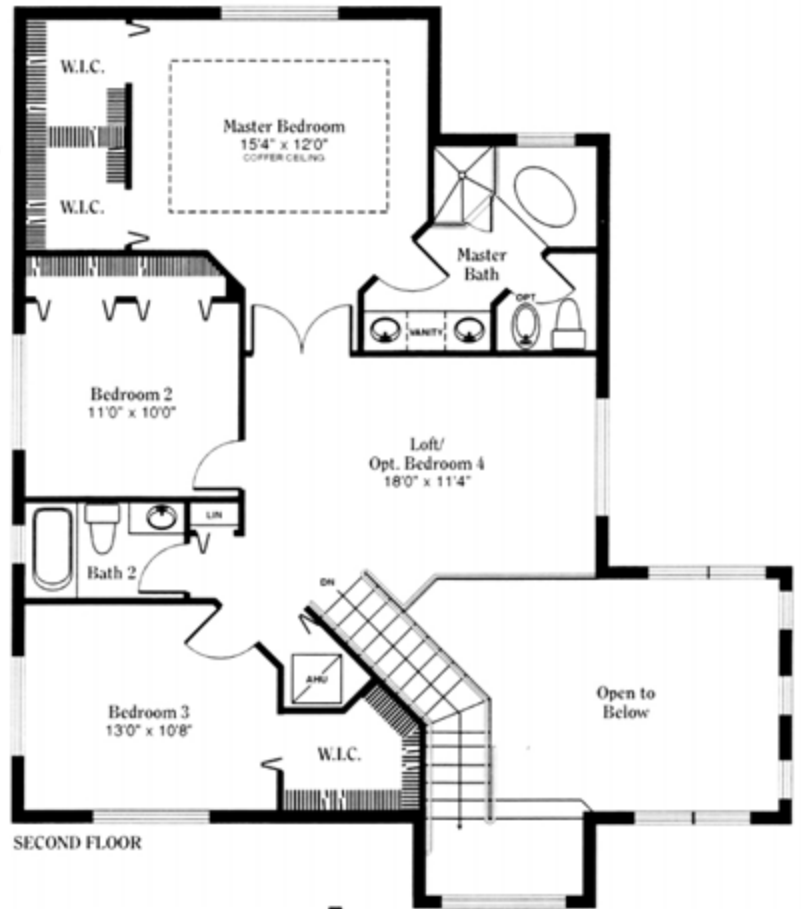
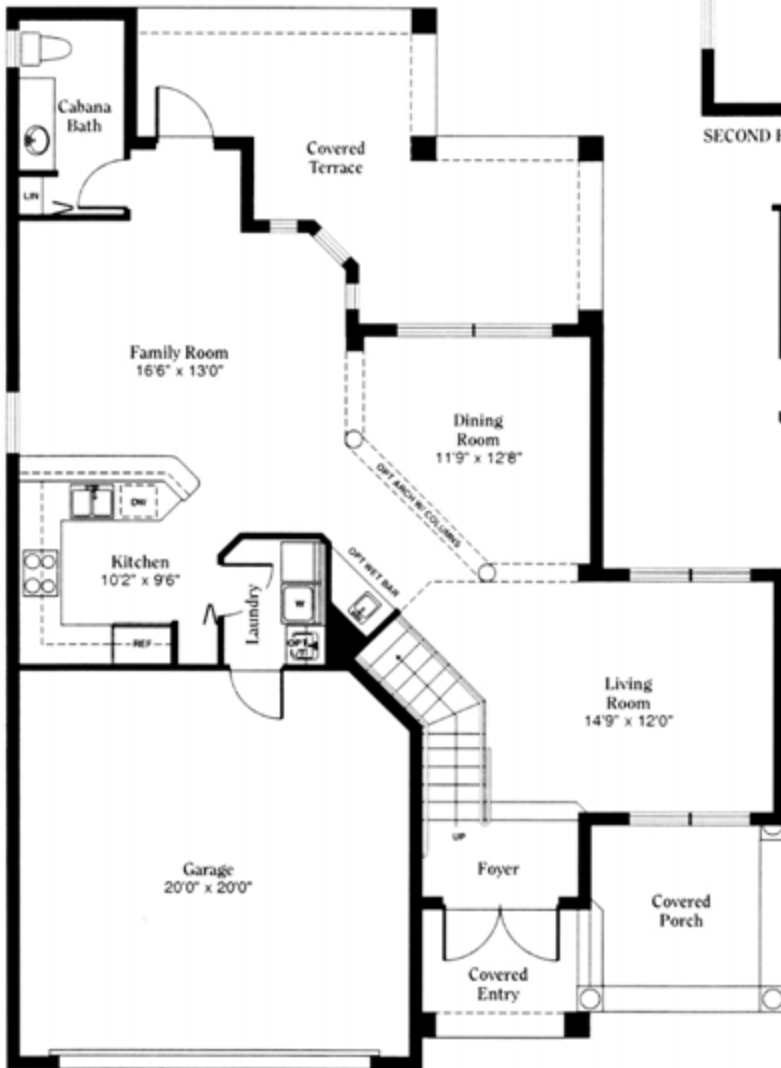
CANTAMAR



# CANTAMAR

## CRESCENDO

1st Floor	965 sq. ft.
2nd Floor	1,106 sq. ft.
Total Living A/C	2,071 sq. ft.
Garage	443 sq. ft.
Covered Entry	160 sq. ft.
Covered Terrace	260 sq. ft.
<b>Total</b>	<b>2,934 sq. ft.</b>



**CENTERLINE**  
HOMES  
www.centerlinehomes.com

 Broker Participation Welcome

Renderings are artist conceptions. Prices, plans, features, specifications, dimensions, and materials are subject to change without notice. 1103